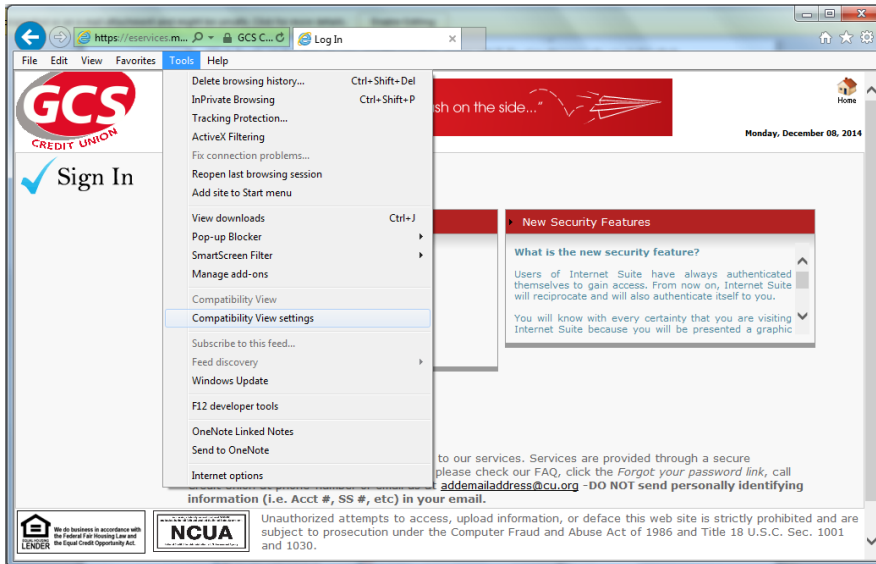
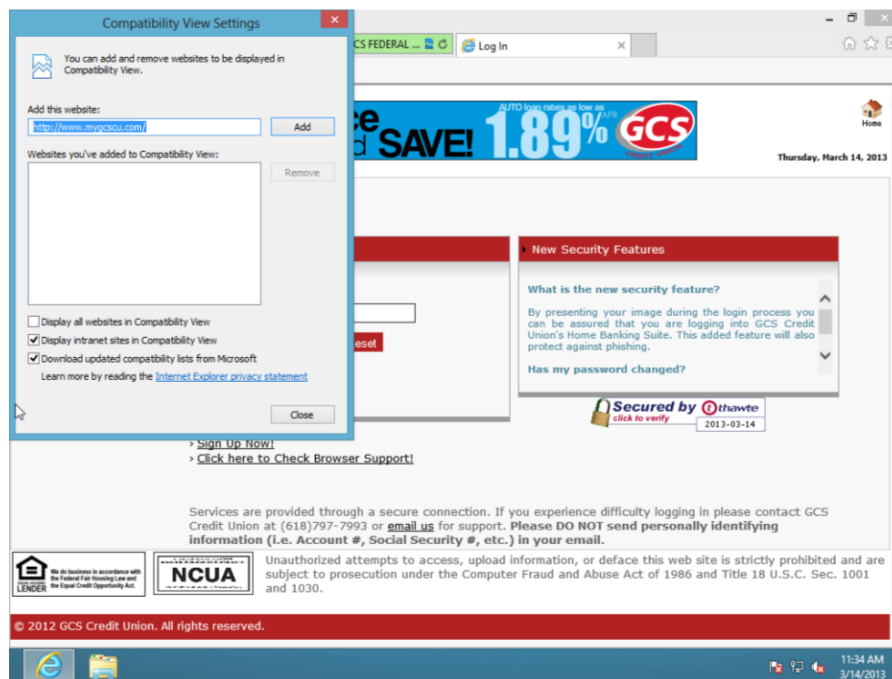


Windows Internet Explorer Compatibility Settings

1. Open up Internet Explorer and go out to our website mygcsu.com, then click online banking and Login to online banking to get to the sign in or <https://eservices.mygcsu.com/ISuite5/Features/Auth/MFA/Default.aspx>
2. Click Tools at the top or you might need to press the ALT key and then press the T key or right click on top of the IE screen and choose Menu Bar.
3. Click Compatibility View Settings or press B.



4. Our website will default into the add the website box. Click Add.



5. Our website should drop down into the Websites you've added to Compatibility View box and now click Close.
6. This should only need to be done one time. If you need assistance please call 618-797-7993.

